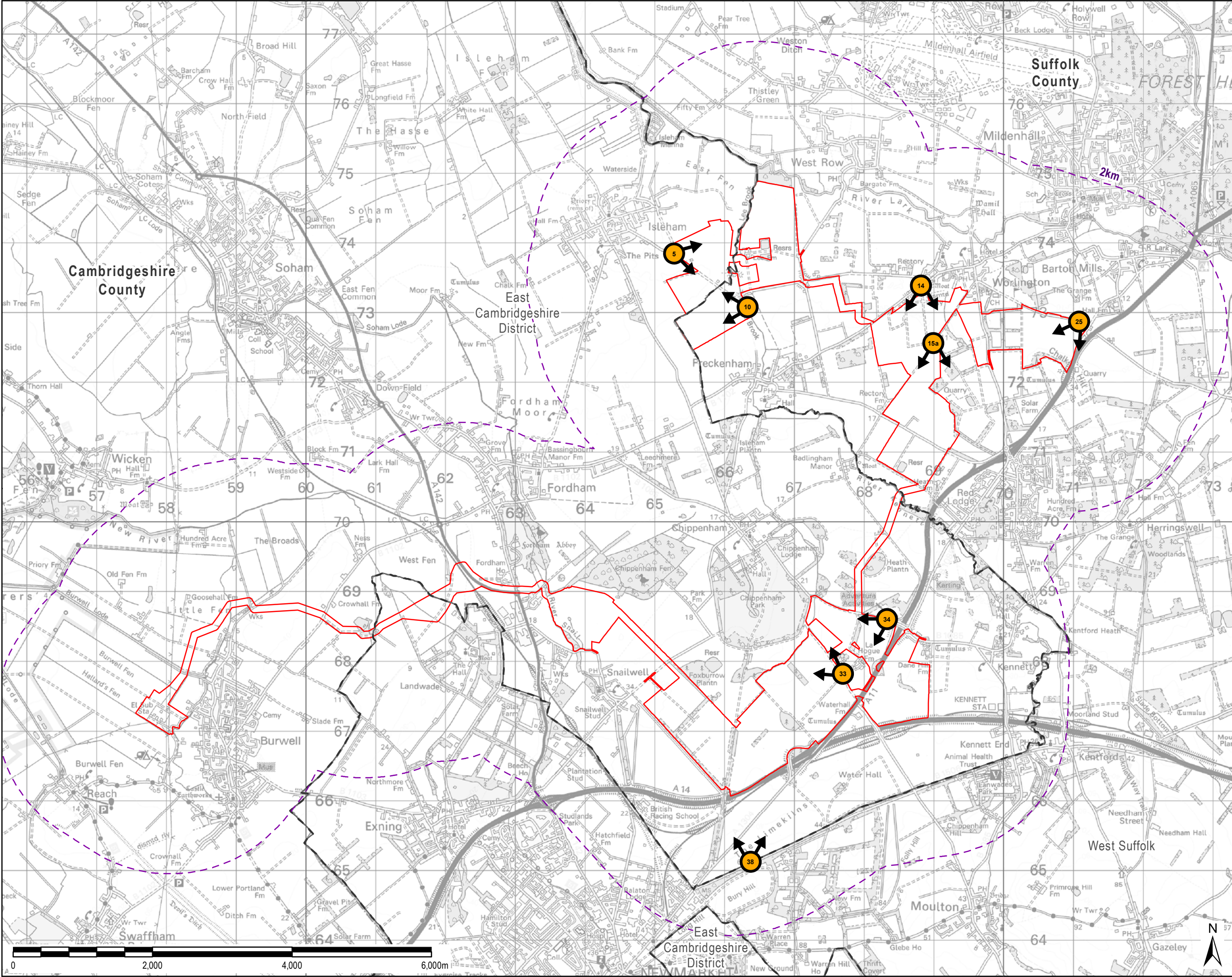


560000

570000



THIS DRAWING IS TO BE USED ONLY FOR THE PURPOSE OF ISSUE THAT IT WAS ISSUED FOR AND IS SUBJECT TO AMENDMENT

LEGEND

- Scheme Boundary
- County Boundary
- District Boundary
- 2km Study Area

Location of Type 4 Visualisations

Copyright:
Contains OS data © Crown copyright and database right 2018
Contains public sector information licensed under the Open Government Licence v3.0

Purpose of Issue
PEIR

Client
SUNNICA LTD

Project Title

Drawing Title
LOCATION OF TYPE 4 VISUALISATIONS

Drawn AD	Checked RH	Approved NC	Date 02/09/2020
AECOM Internal Project No. 60589004		Scale @ A3 1:50,000	

THIS DOCUMENT HAS BEEN PREPARED PURSUANT TO AND IS SUBJECT TO THE TERMS OF AECOM'S APPOINTMENT BY ITS CLIENT. AECOM ACCEPTS NO LIABILITY FOR ANY USE OF THIS DOCUMENT OTHER THAN BY ITS ORIGINAL CLIENT OR FOLLOWING AECOM'S EXPRESS AGREEMENT TO SUCH USE, AND ONLY FOR THE PURPOSES FOR WHICH IT WAS PREPARED AND PROVIDED.

AECOM
Unit 1 Wellbrook Court,
Girton,
Cambridge, CB3 0NA
United Kingdom
Telephone (01223) 488000
www.aecom.com

AECOM

Drawing Number
60589004_PEIR_LSP_028

Rev
0



60° 55° 50° 45° 40° 35° 30° 25° 20° 15° 10° 5° 0°



Imagine it.
Delivered.

Visualisation Type: 4
Projection: Cylindrical
Enlargement Factor: 96%
Paper Size: A1
Correct printed image size: 547 x 146mm

Date / Time: 17/07/2020 07:46
Camera: Canon EOS 5D Mark III
Lens: Canon EF50mm f/1.8 STM
Horizontal Field of View: 120°
Direction of View: south-east

Location: E565275 N273847
Eye level: 10.1m AOD
Height of Camera: 1.6m
Distance to Site: 185m

Note:
Images to be viewed at a comfortable
arm's length.

Sunnica Energy Farm
10.90A
Viewpoint 5: View south-east from Beck Road – Existing View



5° 10° 15° 20° 25° 30° 35° 40° 45° 50° 55° 60°



60° 55° 50° 45° 40° 35° 30° 25° 20° 15° 10° 5° 0°



Imagine it.
Delivered.

Visualisation Type: 4
Projection: Cylindrical
Enlargement Factor: 96%
Paper Size: A1
Correct printed image size: 547 x 146mm

Date / Time: 17/07/2020 07:46
Camera: Canon EOS 5D Mark III
Lens: Canon EF50mm f/1.8 STM
Horizontal Field of View: 120°
Direction of View: south-east

Location: E565275 N273847
Eye level: 10.1m AOD
Height of Camera: 1.6m
Distance to Site: 185m

Note:
Images to be viewed at a comfortable
arm's length.

Sunnica Energy Farm
10.90B

Viewpoint 5: View south-east from Beck Road – Type 4 Visualisation Year 1



5° 10° 15° 20° 25° 30° 35° 40° 45° 50° 55° 60°



Proposed Year 15



Imagine it.
Delivered.

Visualisation Type: 4
Projection: Cylindrical
Enlargement Factor: 96%
Paper Size: A1
Correct printed image size: 547 x 146mm

Date / Time: 17/07/2020 07:46
Camera: Canon EOS 5D Mark III
Lens: Canon EF50mm f/1.8 STM
Horizontal Field of View: 120°
Direction of View: south-east

Location: E565275 N273847
Eye level: 10.1m AOD
Height of Camera: 1.6m
Distance to Site: 185m

Note:
Images to be viewed at a comfortable
arm's length.

Sunnica Energy Farm

10.90C

Viewpoint 5: View south-east from Beck Road – Type 4 Visualisation Year 15



5° 10° 15° 20° 25° 30° 35° 40° 45° 50° 55° 60°



5° 10° 15° 20° 25° 30° 35° 40° 45° 50° 55° 60°



60° 55° 50° 45° 40° 35° 30° 25° 20° 15° 10° 5° 0°



Imagine it.
Delivered.

Visualisation Type: 4
Projection: Cylindrical
Enlargement Factor: 96%
Paper Size: A1
Correct printed image size: 547 x 146mm

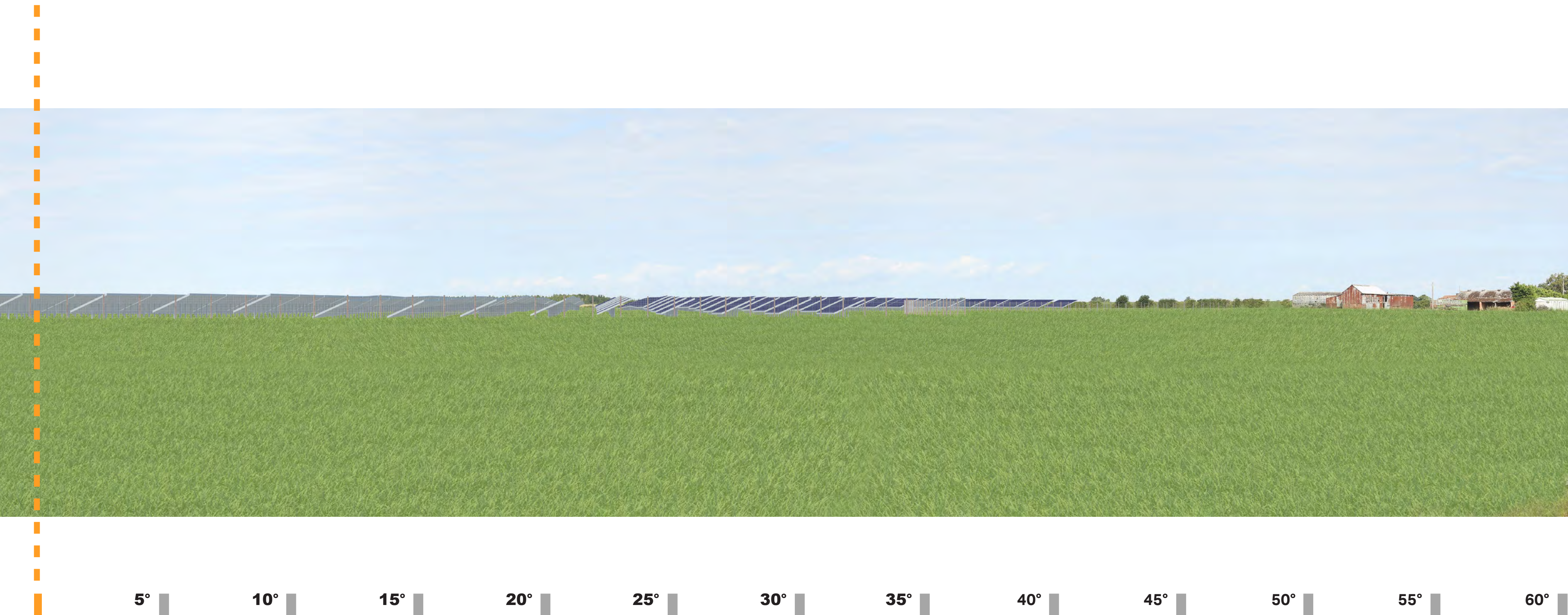
Date / Time: 17/07/2020 09:25
Camera: Canon EOS 5D Mark III
Lens: Canon EF50mm f/1.8 STM
Horizontal Field of View: 120°
Direction of View: south-west

Location: E566364 N273029
Eye level: 7.9m AOD
Height of Camera: 1.6m
Distance to Site: 138m

Note:
Images to be viewed at a comfortable
arm's length.

Sunnica Energy Farm
10.91B

Viewpoint 10: View west from PRow (footpath) W-257/002/X – Type 4 Visualisation Year 1





Imagine it.
Delivered.

Visualisation Type: 4
Projection: Cylindrical
Enlargement Factor: 96%
Paper Size: A1
Correct printed image size: 547 x 146mm

Date / Time: 17/07/2020 09:25
Camera: Canon EOS 5D Mark III
Lens: Canon EF50mm f/1.8 STM
Horizontal Field of View: 120°
Direction of View: south-west

Location: E566364 N273029
Eye level: 7.9m AOD
Height of Camera: 1.6m
Distance to Site: 138m

Note:
Images to be viewed at a comfortable
arm's length.

Sunnica Energy Farm
10.91C

Viewpoint 10: View west from PRow (footpath) W-257/002/X – Type 4 Visualisation Year 15



5° 10° 15° 20° 25° 30° 35° 40° 45° 50° 55° 60°



AECOM Imagine it. Delivered.	Visualisation Type:	4	Date / Time:	04/04/2019 11:35	Location:	E568818 N273390	Note: Images to be viewed at a comfortable arm's length.	Sunnica Energy Farm
	Projection:	Cylindrical	Camera:	Canon EOS 5D Mark III	Eye level:	11.6m AOD		10.92A
	Enlargement Factor:	96%	Lens:	Canon EF50mm f/1.8 STM	Height of Camera:	1.6m		
	Paper Size:	A1	Horizontal Field of View:	90°	Distance to Site:	253m		
	Correct printed image size:	820 x 146mm	Direction of View:	south				Viewpoint 14: View south from the B1102 – Existing View



<div><div>AECOM</div><div>Imagine it. Delivered.</div></div>	Visualisation Type:		4	Date / Time:		04/04/2019 11:35	Location:		E568818 N273390	Note: Images to be viewed at a comfortable arm's length.	Sunnica Energy Farm	
	Projection:		Cylindrical	Camera:		Canon EOS 5D Mark III	Eye level:		11.6m AOD			
	Enlargement Factor:		96%	Lens:		Canon EF50mm f/1.8 STM	Height of Camera:		1.6m		10.92B	
	Paper Size:		A1	Horizontal Field of View:		90°	Distance to Site:		253m			
	Correct printed image size:		820 x 146mm	Direction of View:		south					Viewpoint 14: View south from the B1102 – Type 4 Visualisation Year 1	





Imagine it.
Delivered.

Visualisation Type: 4
Projection: Cylindrical
Enlargement Factor: 96%
Paper Size: A1
Correct printed image size: 547 x 146mm

Date / Time: 17/07/2020 08:31
Camera: Canon EOS 5D Mark III
Lens: Canon EF50mm f/1.8 STM
Horizontal Field of View: 120°
Direction of View: south-west

Location: E569018 N272602
Eye level: 12.6m AOD
Height of Camera: 1.6m
Distance to Site: 36m

Note:
Images to be viewed at a comfortable
arm's length.

Sunnica Energy Farm
10.93A
Viewpoint 15A: View south from U6006 – Existing View



5° 10° 15° 20° 25° 30° 35° 40° 45° 50° 55° 60°



60° 55° 50° 45° 40° 35° 30° 25° 20° 15° 10° 5° 0°



Imagine it.
Delivered.

Visualisation Type: 4
Projection: Cylindrical
Enlargement Factor: 96%
Paper Size: A1
Correct printed image size: 547 x 146mm

Date / Time: 17/07/2020 08:31
Camera: Canon EOS 5D Mark III
Lens: Canon EF50mm f/1.8 STM
Horizontal Field of View: 120°
Direction of View: south-west

Location: E569018 N272602
Eye level: 12.6m AOD
Height of Camera: 1.6m
Distance to Site: 36m

Note:
Images to be viewed at a comfortable
arm's length.

Sunnica Energy Farm
10.93B
Viewpoint 15A: View south from U6006 – Type 4 Visualisation Year 1



5° 10° 15° 20° 25° 30° 35° 40° 45° 50° 55° 60°



Proposed Year 15



Imagine it.
Delivered.

Visualisation Type: 4
Projection: Cylindrical
Enlargement Factor: 96%
Paper Size: A1
Correct printed image size: 547 x 146mm

Date / Time: 17/07/2020 08:31
Camera: Canon EOS 5D Mark III
Lens: Canon EF50mm f/1.8 STM
Horizontal Field of View: 120°
Direction of View: south-west

Location: E569018 N272602
Eye level: 12.6m AOD
Height of Camera: 1.6m
Distance to Site: 36m

Note:
Images to be viewed at a comfortable
arm's length.

Sunnica Energy Farm
10.93C

Viewpoint 15A: View south from U6006 – Type 4 Visualisation Year 15



5° 10° 15° 20° 25° 30° 35° 40° 45° 50° 55° 60°



Proposed Year 15







Existing View



Imagine it.
Delivered.

Visualisation Type: 4
Projection: Cylindrical
Enlargement Factor: 96%
Paper Size: A1
Correct printed image size: 547 x 146mm

Date / Time: 04/04/2019 10:10
Camera: Canon EOS 5D Mark III
Lens: Canon EF50mm f/1.8 STM
Horizontal Field of View: 120°
Direction of View: west

Location: E567714 N267826
Eye level: 26.2m AOD
Height of Camera: 1.6m
Distance to Site: 92m

Note:
Images to be viewed at a comfortable
arm's length.

Sunnica Energy Farm
10.96A

Viewpoint 33: View north-west from La Hogue Road at the junction with La Hogue Farm – Existing View



5° 10° 15° 20° 25° 30° 35° 40° 45° 50° 55° 60°



Imagine it.
Delivered.

Visualisation Type: 4
Projection: Cylindrical
Enlargement Factor: 96%
Paper Size: A1
Correct printed image size: 547 x 146mm

Date / Time: 04/04/2019 10:10
Camera: Canon EOS 5D Mark III
Lens: Canon EF50mm f/1.8 STM
Horizontal Field of View: 120°
Direction of View: west

Location: E567714 N267826
Eye level: 26.2m AOD
Height of Camera: 1.6m
Distance to Site: 92m

Note:
Images to be viewed at a comfortable
arm's length.

Sunnica Energy Farm
10.96B

Viewpoint 33: View north-west from La Hogue Road at the junction with La Hogue Farm – Type 4 Visualisation Year 1



5° 10° 15° 20° 25° 30° 35° 40° 45° 50° 55° 60°



Imagine it.
Delivered.

Visualisation Type: 4
Projection: Cylindrical
Enlargement Factor: 96%
Paper Size: A1
Correct printed image size: 547 x 146mm

Date / Time: 04/04/2019 10:10
Camera: Canon EOS 5D Mark III
Lens: Canon EF50mm f/1.8 STM
Horizontal Field of View: 120°
Direction of View: west

Location: E567714 N267826
Eye level: 26.2m AOD
Height of Camera: 1.6m
Distance to Site: 92m

Note:
Images to be viewed at a comfortable
arm's length.

Sunnica Energy Farm

10.96C

Viewpoint 33: View north-west from La Hogue Road at the junction with La Hogue Farm – Type 4 Visualisation Year 15



5° 10° 15° 20° 25° 30° 35° 40° 45° 50° 55° 60°



Imagine it.
Delivered.

Visualisation Type: 4
Projection: Cylindrical
Enlargement Factor: 96%
Paper Size: A1
Correct printed image size: 547 x 146mm

Date / Time: 04/04/2019 09:52
Camera: Canon EOS 5D Mark III
Lens: Canon EF50mm f/1.8 STM
Horizontal Field of View: 120°
Direction of View: north

Location: E566376 N265127
Eye level: 62m AOD
Height of Camera: 1.6m
Distance to Site: 1085m

Note:
Images to be viewed at a comfortable
arm's length.

Sunnica Energy Farm
10.97A
Viewpoint 38: View north from the Limekilns – Existing View



5° 10° 15° 20° 25° 30° 35° 40° 45° 50° 55° 60°



Imagine it.
Delivered.

Visualisation Type: 4
Projection: Cylindrical
Enlargement Factor: 96%
Paper Size: A1
Correct printed image size: 547 x 146mm

Date / Time: 04/04/2019 09:52
Camera: Canon EOS 5D Mark III
Lens: Canon EF50mm f/1.8 STM
Horizontal Field of View: 120°
Direction of View: north

Location: E566376 N265127
Eye level: 62m AOD
Height of Camera: 1.6m
Distance to Site: 1085m

Note:
Images to be viewed at a comfortable
arm's length.

Sunnica Energy Farm
10.97B

Viewpoint 38: View north from the Limekilns – Type 4 Visualisation Year 1



5° 10° 15° 20° 25° 30° 35° 40° 45° 50° 55° 60°



Imagine it.
Delivered.

Visualisation Type: 4
Projection: Cylindrical
Enlargement Factor: 96%
Paper Size: A1
Correct printed image size: 547 x 146mm

Date / Time: 04/04/2019 09:52
Camera: Canon EOS 5D Mark III
Lens: Canon EF50mm f/1.8 STM
Horizontal Field of View: 120°
Direction of View: north

Location: E566376 N265127
Eye level: 62m AOD
Height of Camera: 1.6m
Distance to Site: 1085m

Note:
Images to be viewed at a comfortable
arm's length.

Sunnica Energy Farm
10.97C

Viewpoint 38: View north from the Limekilns – Type 4 Visualisation Year 15



5° 10° 15° 20° 25° 30° 35° 40° 45° 50° 55° 60°